



OPTIMIZING SCHEDULER

Training advancements on an individualized timeline

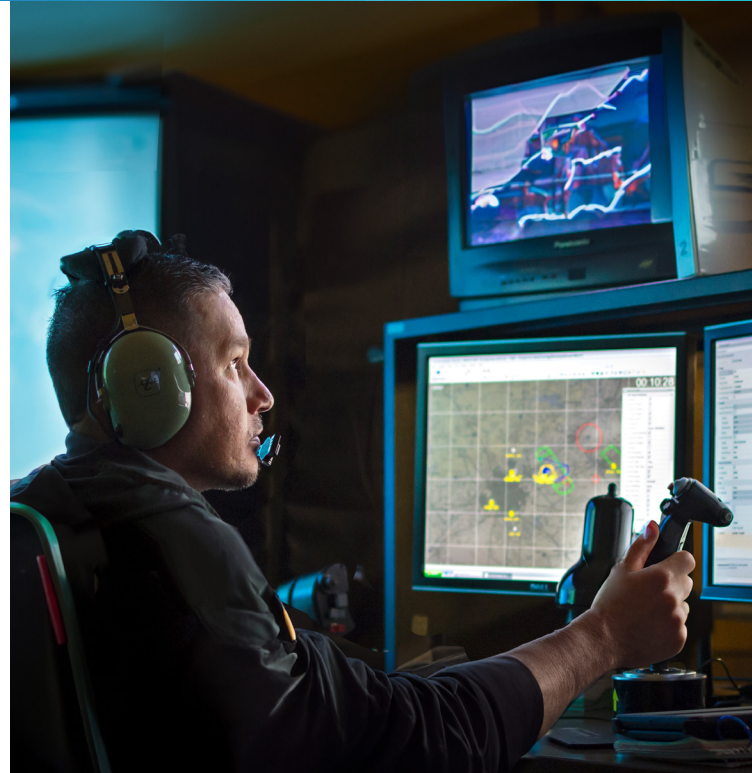


Evidence-based recommendations

One-size-fits-all training programs can waste time and resources when all students have to follow the same learning path. Our KWYN™ Optimizing Scheduler increases training program effectiveness by accelerating student throughput, saving classroom or simulation time, and reducing training costs—all while maintaining training quality.

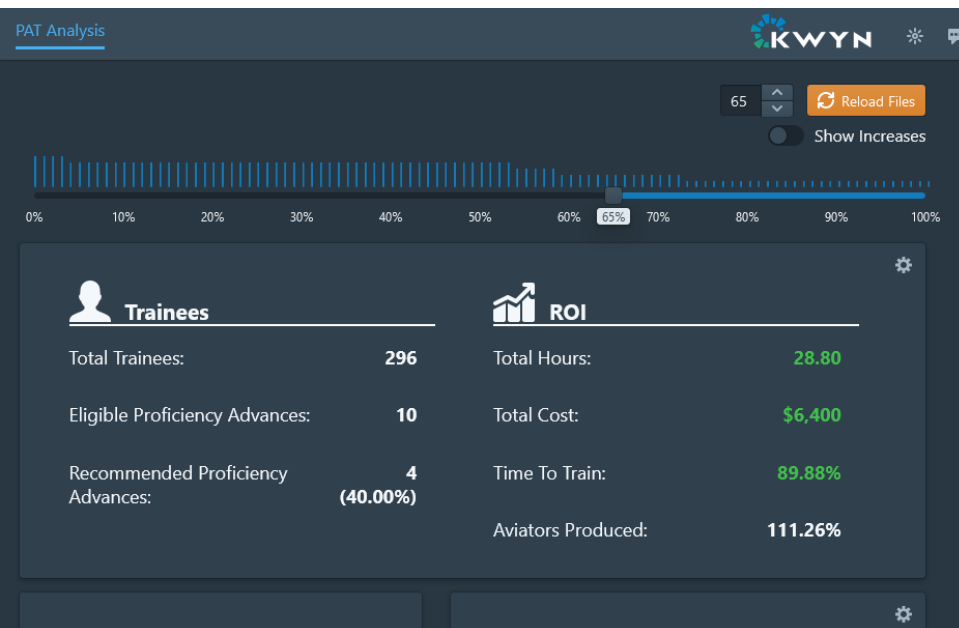
The KWYN Optimizing Scheduler with Proficiency Advance Feature ingests and analyzes training data to provide evidence-based recommendations about the best sequence of training events. Our scheduler algorithm simplifies complexity; it enables schedules to be created in seconds and allows for fine-tuning of operations as needed.

The Proficiency Advance Feature assesses a student’s skill levels across classes and training events to estimate the student’s ability to advance within the program based on proficiency rather than the current syllabus’s fixed timeline. With this feature, more proficient students can advance rapidly while others spend more time solidifying required skills.



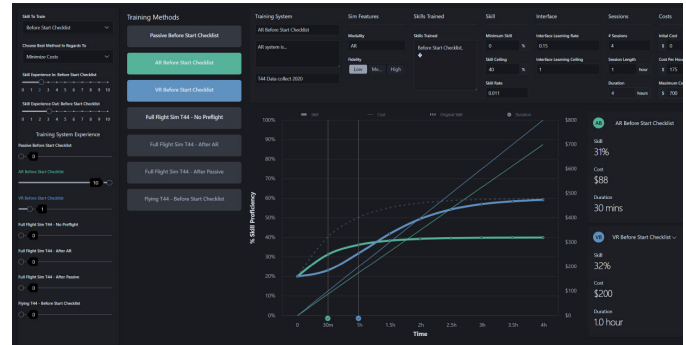
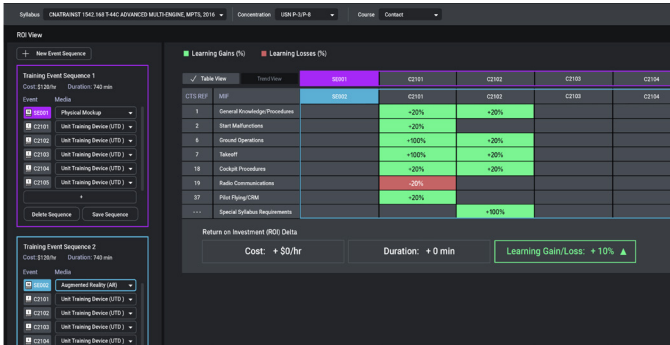
How it works

- 1 Automatically pulls students’ schedules and event scores from learning management systems.
- 2 Recommends customized learning pathways, within different training modalities, based on demonstrated proficiency to avoid needless repetition of instruction and unnecessary expenses.
- 3 Evaluates combinations of students, instructors, and resources to create an organization-wide training schedule optimized for each individual’s needs.



Intuitive analytics

The KWYN Optimizing Scheduler provides intuitive analytics, including reports and data visualization tools that allow users to analyze training data and make informed recommendations about their training program.



Optimize daily training schedule over time, resources, and constraints.

Assess training system ROI against simulation fidelity and other factors.

Key advantages

- Provides an evidence-based analysis that helps you optimize training sequences.
- Offers an AI-powered analysis of your organization's data to help you identify current students who can advance in training.
- Enables a fully customizable user experience, letting you make changes dynamically, in real time.
- Allows your organization to make wise, evidence-based investments in training systems to maximize ROI.

Charles River Analytics Inc. holds full rights in all technical data and computer software described herein for 20 years from start of contract, in accordance with DFARS clause 252.227-7018. The Government's rights to use, modify, reproduce, release, perform, display, or disclose technical data or computer software marked with this legend are restricted during the period shown as provided in paragraph (b)(4) of the Rights in Noncommercial Technical Data and Computer Software—Small Business Innovative Research (SBIR) Program clause contained in the above identified contract. No restrictions apply after the expiration date. Any reproduction of technical data, computer software, or portions thereof marked with this legend must also reproduce the markings.

charles river analytics

Charles River Analytics brings foundational research to life, creating human-centered intelligent systems at the edge of what's possible, through deep partnerships with our customers.

For more information, contact

Dr. Peter Weyhrauch
Vice President, Human-Centered AI
(617) 234-5052
pweyrauch@cra.com